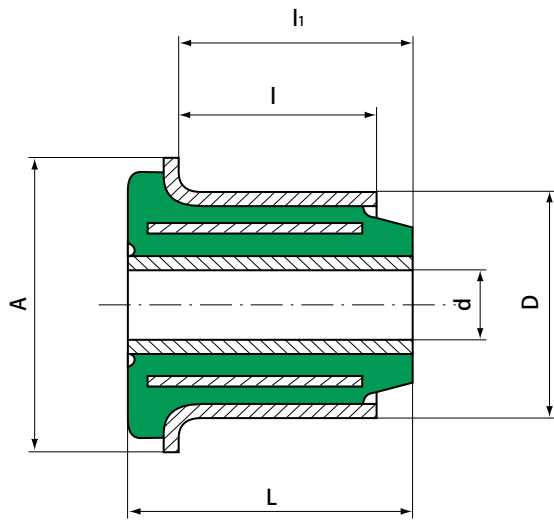
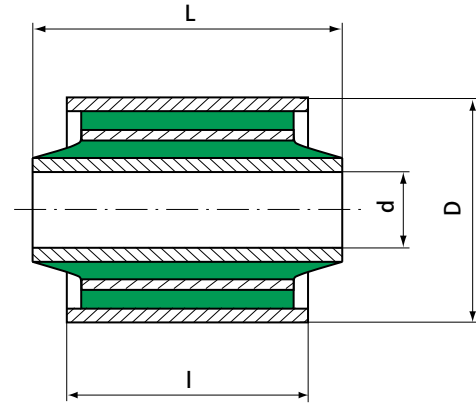




LAMINATED BUSHES



Shape 1



Shape 2

DIMENSIONS

d (mm)	D (mm)	A (mm)	L (mm)	l (mm)	l1 (mm)	fig.	Reference
12	34	-	48	30	-	2	560033
14	35	-	58,3	43	-	2	561040
14	40	55	27,4	16,3	17	1	531427
16	40	-	46	32	-	2	560062
20	38	-	60	59	-	2	579071

OPERATING CHARACTERISTICS

Reference	Maximum Radial Load		Axial Static Load daN	Torsion	
	Statique daN	Dynamique daN		Max Angle	Approx torque N.m.
531427*	400	-	130	20°	80
560062	900	-	40	15°	20
560033	750	-	40	20°	10
561040	850	-	50	20°	50
579071	10500	15000	-	6°	54

* The axial load is measured on the side of the lateral stop.

1 kg ≈ 1 daN